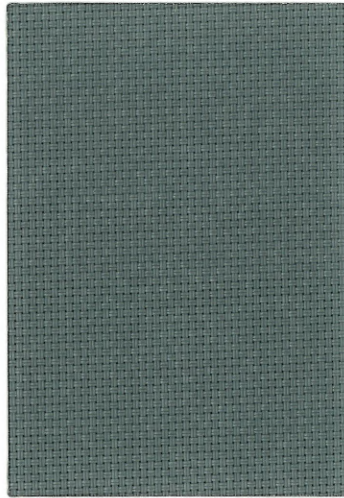


INTERIOR COLLECTION

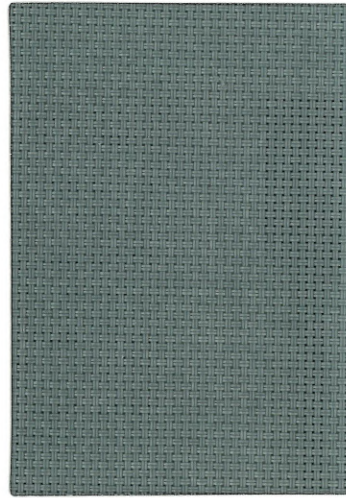
# Sunshadow

3000 N 3% - 5%



3000 N401  
Dim grey

OF: **3%**



3000 N401  
Dim grey

OF: **5%**

Sunshadow

3000 N 3% - 5%

INTERIOR COLLECTION

## Technical properties

Technical specifications	Average Values		Standard	
Composition	PES 25%		ISO 1833-1	
	PVC 75%			
Weight (/sqm)	445 / 420 gr		ISO 3031	
Thickness	0,59 / 0,55 mm		ISO 5084	
Fabric count (sq. Inch)			ISO 7271/2	
Tensile strength (daN/5cm)	Warp 197 / 170 daN - Weft 168 / 170 daN		ISO 1421/1	
Tearing strength	Warp 7,4 / 6,6 daN - Weft 7,0 / 7,0 daN		ISO 4674	
Colorfastness to light	>7		ISO 105 B03	
Fire resistance	C s2 d0	B1	EN 13501-01 (EU)	DIN 4102 (DE)
	M1		NF P92-593 (FR)	NFPA 701 (US)
Environment	OEKO-TEX standard 100			
	GREENGUARD			
Standard width	250cm-300cm			
Standard length	30 meter/roll			
Cutting	best result with ultrasonic cutting			
Welding	thermal, HF, ultrasonic, sewing			
Cleaning	remove dust from the fabric surface, then wipe gently			
	with a humid soft sponge while using a mild detergent			



FIVE YEAR  
WARRANTY



FIRE  
RETARDANT



ANTI-  
BACTERIAL



LEAD  
FREE



OEKO-TEX®  
CONFIDENCE IN TEXTILES  
**STANDARD 100**



1905063 Centexbel

Tested for harmful substances.  
www.oeko-tex.com/standard100

# Sunshadow

3000 N 3%-5%

This is our basic range, 2x2 basket woven fabric with a traditional OF: 3% or 5%. One of our most popular range with a nice clear see-through and excellent contact with the outside.

FR certification available (M1 and B1 and Cs2d0). 15 colours and 2 widths are available in our warehouse.

3000 UN001  
Ultra white

3000 N001  
White

3000 N002  
White-beige

3000 N003  
White-grey

3000 N201  
Beige

3000 N203  
Beige-grey

3000 N008  
White-sand

3000 N009  
White-dim grey

3000 N301  
Grey

3000 N302  
Grey-dim grey

3000 N401  
Dim grey

3000 N901  
Charcoal

3000 N902  
Charcoal bronze

3000 N903  
Charcoal grey

3000 N904  
Charcoal-dim grey

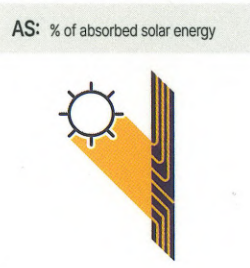
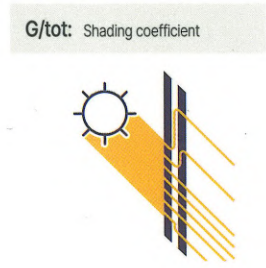
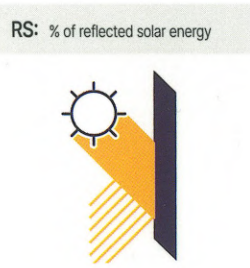
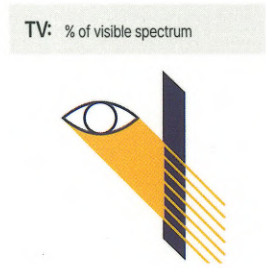
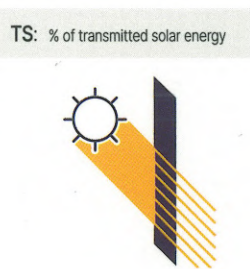
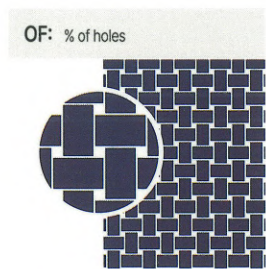


# Solar and visible light properties

DIN ISO 52022-1

Ref.	Ts	Rs	As	Tv	Rv	Av	Tuv	Double glazing with low emission degree and argon interspace	
								U <sub>g</sub> = 1,2 W/(m²K) g = 0,59	
								g <sub>tot</sub>	F <sub>e</sub>
3%									
UN001	28	65	7	24	74	2	10,4	0,36	0,61
N001	20	71	9	16	83	1	4,4	0,34	0,57
N002	20	61	19	16	69	15	4,6	0,37	0,63
N003	13	48	39	9	54	37	4,7	0,41	0,7
N201	21	49	30	17	54	29	5,1	0,41	0,7
N203	14	39	47	10	42	48	5	0,44	0,75
N008	14	53	33	9	58	33	3,9	0,40	0,67
N009	10	39	51	7	44	49	4	0,44	0,75
N301	9	31	60	6	33	61	4,7	0,47	0,79
N302	9	24	67	6	25	69	5,2	0,49	0,83
N401	7	16	77	5	15	80	4,6	0,52	0,88
N901	5	4	91	5	4	91	4,7	0,56	0,94
N902	5	7	88	4	6	90	4,2	0,55	0,93
N903	6	15	79	6	16	78	5,2	0,52	0,88
N904	5	9	86	4	10	86	4,1	0,54	0,91

Ref.	Ts	Rs	As	Tv	Rv	Av	Tuv	Double glazing with low emission degree and argon interspace	
								U <sub>g</sub> = 1,2 W/(m²K) g = 0,59	
								g <sub>tot</sub>	F <sub>e</sub>
5%									
UN001	29	62	9	26	70	4	12,1	0,37	0,63
N001	22	67	11	19	78	3	6,6	0,35	0,6
N002	22	57	21	19	65	16	7,3	0,39	0,65
N003	13	45	42	9	50	41	5,2	0,42	0,72
N201	23	48	29	19	53	28	6,9	0,42	0,71
N203	17	51	32	10	42	48	5,5	0,44	0,75
N008	14	55	31	12	56	32	6,5	0,40	0,69
N009	12	37	51	9	41	50	6,0	0,45	0,76
N301	10	30	60	7	32	61	5,7	0,47	0,8
N302	9	22	69	6	23	71	4,6	0,50	0,84
N401	8	16	76	6	15	79	4,8	0,52	0,88
N901	8	4	88	8	4	88	7,7	0,56	0,94
N902	5	8	87	4	7	89	4,4	0,54	0,92
N903	7	17	76	7	18	75	6,2	0,51	0,87
N904	7	10	83	6	10	84	5,8	0,53	0,91



## Classification EN 14501 (2021 - 09)

Code	glare control		privacy night		sight contact with the outside		daylight utilisation	
	3%	5%	3%	5%	3%	5%	3%	5%
UN001	0	0	2	1	0	1	2	2
N001	0	0	2	1	1	2	2	2
N002	0	0	2	1	1	2	2	2
N003	1	1	2	2	1	1	1	1
N201	0	0	2	1	1	2	2	2
N203	1	0	2	1	1	2	1	1
N008	1	0	2	1	1	2	1	1
N009	1	0	2	1	2	3	1	1
N301	1	0	2	1	2	3	1	1
N302	1	1	2	2	2	2	1	1
N401	1	1	2	2	2	2	1	1
N901	1	0	2	1	2	3	1	1
N902	1	1	2	2	2	2	1	1
N903	1	0	2	1	2	3	1	1
N904	1	0	2	1	2	3	1	1

Influence on visual comfort					
Class	0	1	2	3	4
	very small effect	small effect	moderate effect	high effect	very high effect

All data are purely indicative and non contractual



Solaye Fabrics | Dehemlaan 27, B-8900 Ieper |  
T +32 (0)57 220 130 | info@solayefabrics.eu | [solayefabrics.eu](http://solayefabrics.eu)